

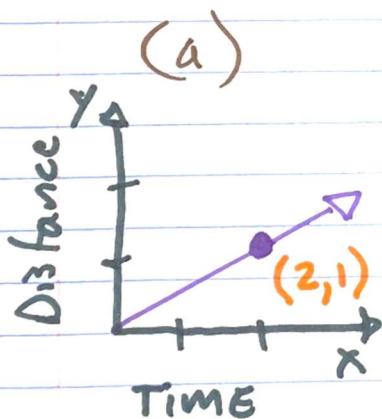
## Part 2-10 → Interpreting Graphs of Proportional Relationships

A car is moving at a constant speed.  
The equation for its movement is

$$d = 2t$$

Where "d" is distance in miles and  
where "t" is time in minutes.

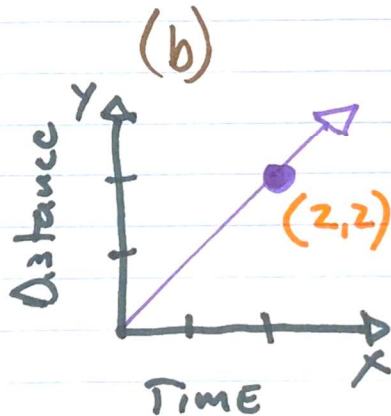
Which graph shows This relationship?



NO

This is 2 minutes  
for 1 mile

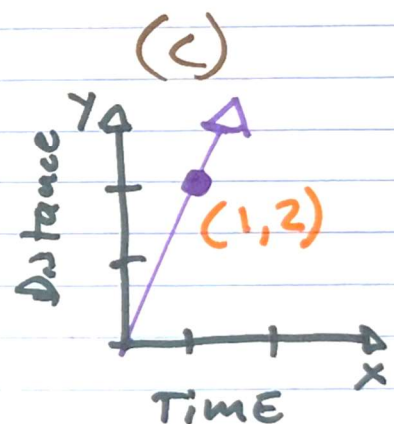
$d = 2t$   
is 2 miles every  
minute



NO

This is 2 minutes  
for 2 miles

$d = 2t$   
is 2 miles  
every minute



Yes!!

This is  
1 minute  
for 2 miles  
just like  
 $d = 2t$